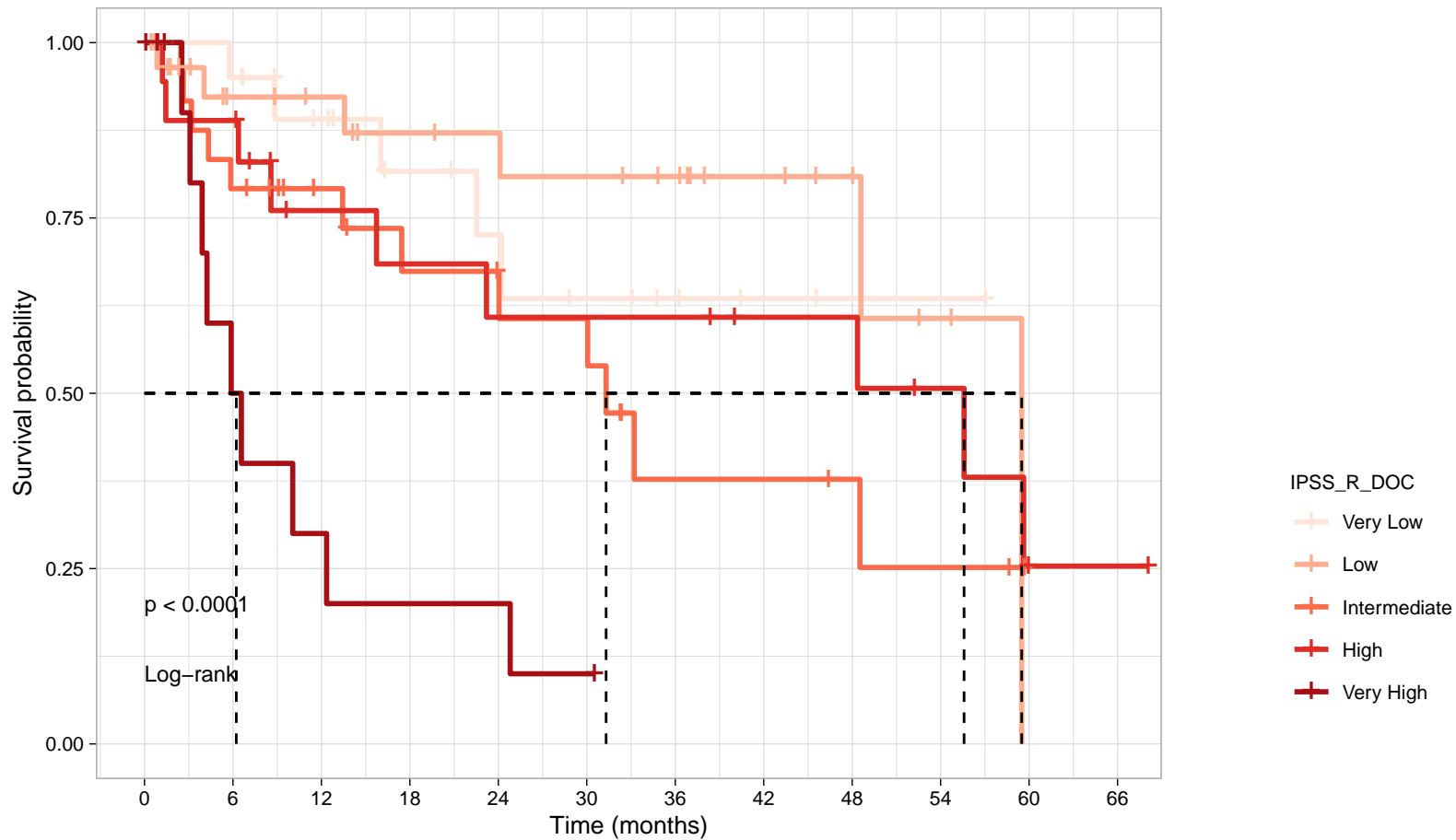


OS (n=109/142/144)



21	19	14	10	8	6	4	2	1	1	0	0
30	20	18	15	14	13	11	7	5	2	0	0
24	19	14	11	10	9	4	4	3	2	0	0
19	16	10	9	8	8	8	6	6	4	1	1
13	5	3	2	2	1	0	0	0	0	0	0