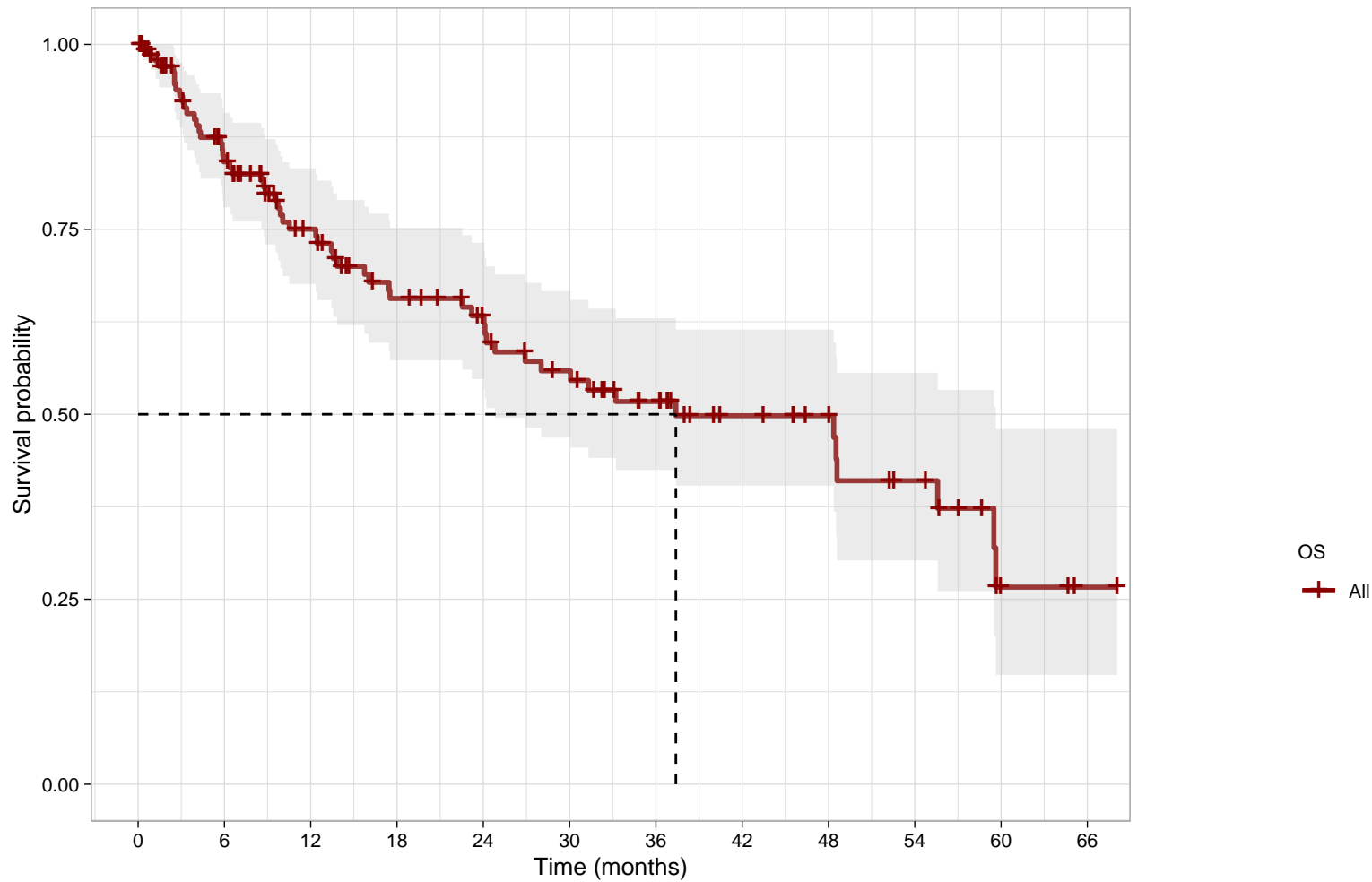


OS (n=142/144)



Time (months)	Survival Probability
0	1.00
6	0.85
12	0.75
18	0.68
24	0.60
30	0.55
36	0.52
42	0.50
48	0.45
54	0.40
60	0.28
66	0.27

All

Time (months)	Survival Probability	n
0	1.00	142
6	0.85	102
12	0.75	76
18	0.68	60
24	0.60	52
30	0.55	43
36	0.52	32
42	0.50	22
48	0.45	18
54	0.40	12
60	0.28	3
66	0.27	1